

OEAO AD 2.1 AERODROME LOCATION INDICATOR AND NAME

OEAO - ALULA / PRINCE ABDULMAJEEB BIN ABDULAZIZ INTERNATIONAL

OEAO AD 2.2 AERODROME GEOGRAPHICAL AND ADMINISTRATIVE DATA

1	ARP coordinates and site at AD	262859N 0380707E 124 / 1 525M FM THR12 .
2	Direction and distance from (city)	050 , 25KM FM AL ULA .
3	Elevation/Reference temperature	2 046 FT
4	Geoid undulation at AD ELEV PSN	42FT at ARP
5	MAG VAR/Annual change	3°E (2010) / 2.9
6	AD Administration, address, telephone, telefax, telex, AFS	General Authority Of Civil Aviation Prince Abdulmajeed Bin Abdulaziz International Airport. Alula. Saudi Arabia TEL: +966 14 8847100 FAX: +966 14 8847107 Telex: NIL AFTN: NIL
7	Types of traffic permitted (IFR/VFR)	IFR and VFR
8	Remarks	Uncontrolled AD. For more INFO contact TEL: +966 14 8847102.

OEAO AD 2.3 OPERATIONAL HOURS

1	AD Administration	HS SUN - SAT 05:00 -13:00 (0800-1600 LMT)
2	Customs and immigration	HO
3	Health and sanitation	(First AID) during scheduled flight.
4	AIS Briefing Office	NIL
5	ATS Reporting Office (ARO)	NIL
6	MET Briefing Office	HO
7	ATS	NIL
8	Fuelling	NIL
9	Handling	On request
10	Security	H24
11	De-icing	NIL
12	Remarks	Operatiol hours 04:00-20:00

OEAO AD 2.4 HANDLING SERVICES AND FACILITIES

1	Cargo-handling facilities	NIL
2	Fuel/oil types	NIL
3	Fuelling facilities/capacity	NIL
4	De-icing facilities	NIL
5	Hangar space for visiting aircraft	Open air parking
6	Repair facilities for visiting aircraft	NIL
7	Remarks	NIL

OEAO AD 2.5 PASSENGER FACILITIES

1	Hotels	In the city , reservation at AD .
2	Restaurants	At AD .
3	Transportation	Taxi - Rental car .
4	Medical facilities	Clinic for first aid .
5	Bank and Post Office	In the city
6	Tourist Office	NIL
7	Remarks	NIL

OEAO AD 2.6 RESCUE AND FIRE FIGHTING SERVICES

1	AD category for fire fighting	CAT 7
2	Rescue equipment	Yes
3	Capability for removal of disabled aircraft	NIL
4	Remarks	NIL

OEAO AD 2.7 SEASONAL AVAILABILITY - CLEARING

1	Types of clearing equipment	NIL
2	Clearance priorities	NIL
3	Remarks	NIL

OEAO AD 2.8 APRONS, TAXIWAYS AND CHECK LOCATIONS/POSITIONS DATA

1	Apron surface and strength	Surface: Concrete Strength: 86/R/B/W/T
2	Taxiway width, surface and strength	TXY A and B Width: 23 M TXY A and B Surface: Asphalt TXY A Strenght: 80/F/B/X/T TXY B, A2, A3, A4, B2, B3 and B4 Strenght: 79/F/B/X/T
3	Altimeter checkpoint location and elevation	NIL
4	VOR checkpoints	NIL
5	INS checkpoints	NIL
6	Remarks	NIL

OEAO AD 2.9 SURFACE MOVEMENT GUIDANCE AND CONTROL SYSTEM AND MARKINGS

1	Use of aircraft stand ID signs, TWY guide lines and visual docking/parking guidance system of aircraft stands	Taxing guidance signs at intersection with connecting TWY and RWY and at holding position. Distance markers at RWY track. Guide lines at apron. Nose-in guidance at aircraft stands.
2	RWY and TWY markings and LGT	RWY Marking: Designation, THR, TDZ, Center Line, RWY Edge and RWY End, pre THR RWY Lighting: Edge, Runway end and Threshold. TWY Marking: CL, Edge, TWY/RWY intersection, Holding Position TWY Lighting: EDGE, Guidance sign
3	Stop bars	NIL
4	Remarks	NIL

OEAO AD 2.10 AERODROME OBSTACLES

In approach/TKOF areas			In circling area and at AD		Remarks
1			2		3
RWY NR/Area affected	Obstacle type Elevation Markings/LGT	Coordinates	Obstacle type Elevation Markings/LGT	Coordinates	
a	b	c	a	b	
NIL	NIL	NIL	NIL	NIL	

OEAO AD 2.11 METEOROLOGICAL INFORMATION PROVIDED

1	Associated MET Office	AL ULA MET OFFICE
2	Hours of service MET Office outside hours	HO
3	Office responsible for TAF preparation Periods of validity	Jeddah Central Forecast Office (CFO) (TAF periods of validity H30). TEL: +966 12 6532173 and +966 12 6532173 FAX: +966 12 6530197
4	Trend forecast Interval of issuance	NIL
5	Briefing/consultation provided	NIL
6	Flight documentation Language(s) used	NIL
7	Charts and other information available for briefing or consultation	NIL
8	Supplementary equipment available for providing information	NIL
9	ATS units provided with information	NIL
10	Additional information (limitation of service, etc.)	TEL: 00966148847115

OEAO AD 2.12 RUNWAY PHYSICAL CHARACTERISTICS

Designations RWY NR	TRUE & MAG BRG	Dimensions of RWY(M)	Strength (PCN) and surface of RWY and SWY	THR coordinates RWY end coordinates THR geoid undulation	THR elevation and highest elevation of TDZ of precision APP RWY
1	2	3	4	5	6
12	120° GEO 117° MAG	3050 X 45	60/F/B/X/T Asphalt	262923.21N 0380619.46E GUND 42.25 FT	THR: 1 995 FT TDZ: 2018 FT
30	300° MAG 297° MAG	3050 X 45	60/F/B/X/T Asphalt	262834.24N 0380755.24E GUND 42.25 FT	THR: 2 046 FT TDZ: 2047 FT

Slope of RWY-SWY	SWY dimensions (M)	CWY dimensions (M)	Strip dimensions (M)	OFZ	Remarks
7	8	9	10	11	12
0.5%	120 X 45	240 X 45	3650 X 300	NIL	NIL
0.5%	120 X 45	240 X 45	3650 X 300	NIL	NIL

OEAO AD 2.13 DECLARED DISTANCES

RWY Designator	TORA (M)	TODA (M)	ASDA (M)	LDA (M)	Remarks
1	2	3	4	5	6
12	3050	3290	3170	3050	NIL
30	3050	3290	3170	3050	NIL

OEAO AD 2.14 APPROACH AND RUNWAY LIGHTING

RWY Designator	APCH LGT type LEN INTST	THR LGT colour WBAR	VASIS (MEHT) PAPI	TDZ, LGT LEN	RWY Centre Line LGT Length, spacing, colour, INTST	RWY edge LGT LEN, spacing, colour INTST	RWY End LGT colour WBAR	SWY LGT LEN (M) colour	Remarks
1	2	3	4	5	6	7	8	9	10
12	precision CAT I 900 M LIH	Green	PAPI 3° Both side	NIL	NIL	3050M 60M White LIH	Red	NIL	Sequence flash light system (SFLS) in approach LGT.
30	precision CAT I 900 M LIH	Green	PAPI 3° Both side	NIL	NIL	3050M 60M White LIH	Red	NIL	Sequence flash light system (SFLS) in approach LGT.

OEAO AD 2.15 OTHER LIGHTING, SECONDARY POWER SUPPLY

1	ABN/IBN location, characteristics and operational hours	ABN: On fire and rescue building , flashing green and white 24 flash/MIN 262848.49N 0380646.86E H24
2	LDI location and LGT Anemometer location and LGT	LDI: NIL WDI: Lighted
3	TWY edge and centre line lighting	Edge: Connecting TWY Center line: NIL
4	Secondary power supply/switch-over time	7 SEC
5	Remarks	Solar Beacons on mountains at north and south of RWY

OEAO AD 2.16 HELICOPTER LANDING AREA

1	Coordinates TLOF or THR of FATO Geoid undulation	NIL
2	TLOF and/or FATO elevation M/FT	NIL
3	TLOF and FATO area dimensions, surface, strength, marking	NIL
4	True BRG of FATO	NIL
5	Declared distance available	NIL
6	APP and FATO lighting	NIL
7	Remarks	NIL

OEAO AD 2.17 ATS AIRSPACE

1	Designation and lateral limits	ATZ: A circle of radius 5 NM centered on 262938N 0380637E
2	Vertical limits	MSL to 5500 FT
3	Airspace classification	G
4	ATS unit call sign Language(s)	NIL
5	Transition altitude	13000 FT
6	Remarks	NIL

OEAO AD 2.18 ATS COMMUNICATION FACILITIES

Service designation	Call sign	Frequency	Hours of operation	Remarks
1	2	3	4	5
TIBA	TIBA	122.8 MHZ	H24	1-TIBA procedure must be followed . 2-Call FRS at least 15 MIN before ARR time on FREQ 133.5

OEAO AD 2.19 RADIO NAVIGATION AND LANDING AIDS

Type of aid, MAG VAR, CAT of ILS/MLS (For VOR/ILS/MLS, give declination)	ID	Frequency	Hours of operation	Position of transmitting antenna coordinates	Elevation of DME transmitting antenna	Remarks
1	2	3	4	5	6	7
DVOR/DME	AUA	114.9 MHZ CH 96X	H24	262817.8N 0380826.3E	2 100 FT	Obstruction LGT U/S

OEAO AD 2.20 LOCAL TRAFFIC REGULATIONS

- FOLLOW-ME service available upon request.
- Marshaller Guidance and Instructions provided on Apron.

OEAO AD 2.21 NOISE ABATEMENT PROCEDURES

NIL

OEAO AD 2.22 FLIGHT PROCEDURES

NIL

OEAO AD 2.23 ADDITIONAL INFORMATION

NIL

OEAO AD 2.24 CHARTS RELATED TO AN AERODROME

Chart name	Page
Aerodrome chart - ICAO	AD 2-OEAO-7
Aircraft parking / docking chart - ICAO	AD 2-OEAO-9
Instrument Approach Chart - ICAO (VOR/DME RWY 12)	AD 2-OEAO-11
VOR/DME RWY 12 (Data tabulation)	AD 2-OEAO-12
Instrument Approach Chart - ICAO (VOR/DME RWY 30)	AD 2-OEAO-13
VOR/DME RWY 30 (aeronautical data tabulation)	AD 2-OEAO-14
Instrument Approach Chart - ICAO (RNP RWY 12)	AD 2-OEAO-15

Chart name	Page
RNP RWY 12 (aeronautical data tabulation)	AD 2-OEAO-16
Instrument Approach Chart - ICAO (RNP RWY 30)	AD 2-OEAO-17
RNP RWY 30 (aeronautical data tabulation)	AD 2-OEAO-18

AERODROME CHART - ICAO

26°28'59"N
038°07'07"E **ELEV 2046**

FRS: 133.5
TIBA: 122.8
FIRE & RESCUE: 121.9
UNCONTROLLED AD

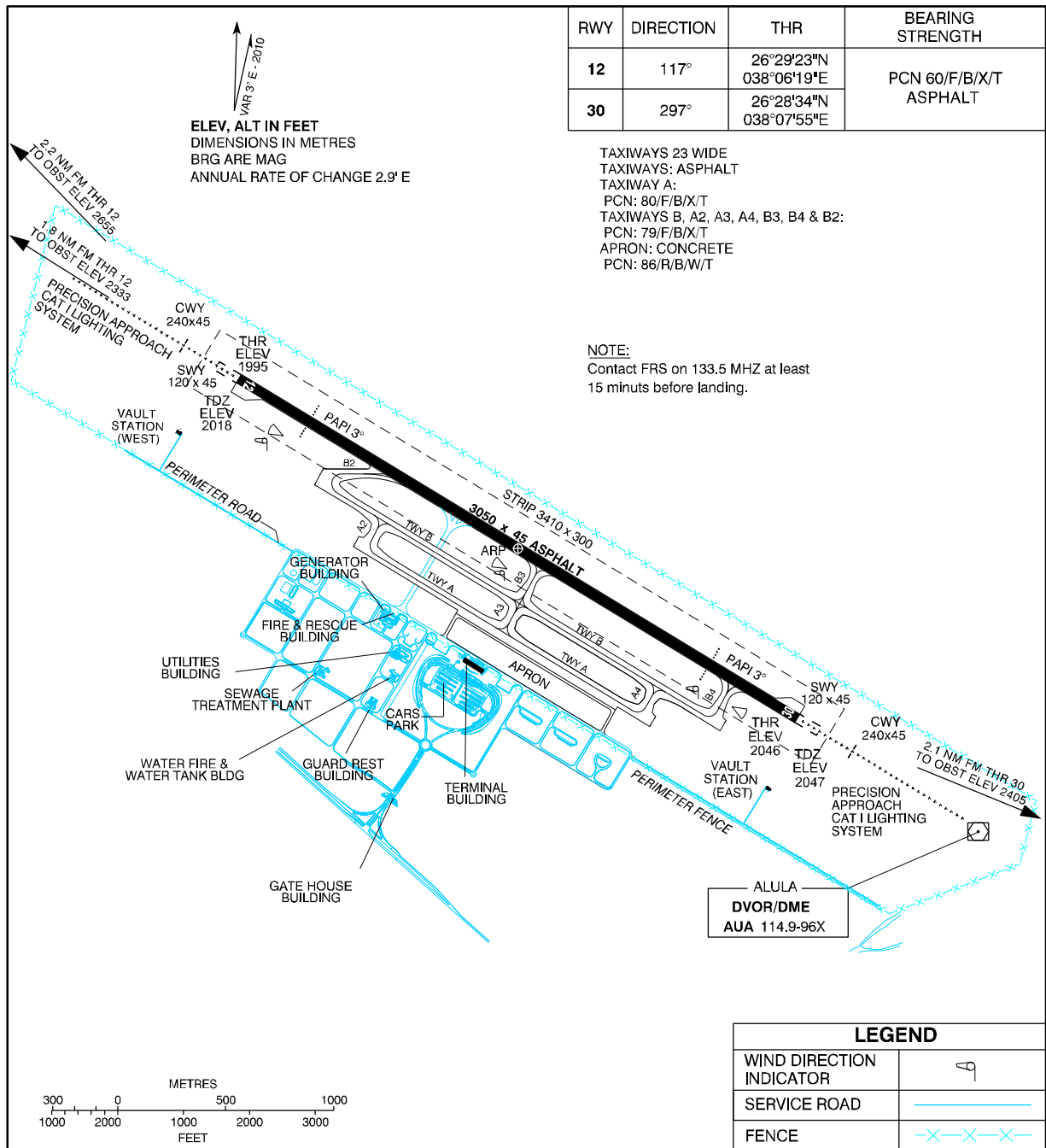
**ALULA/
Prince Abdulmajeed Bin Abdulaziz International**

RWY	DIRECTION	THR	BEARING STRENGTH
12	117°	26°29'23"N 038°06'19"E	PCN 60/F/B/X/T ASPHALT
30	297°	26°28'34"N 038°07'55"E	

ELEV, ALT IN FEET
DIMENSIONS IN METRES
BRG ARE MAG
ANNUAL RATE OF CHANGE 2.9' E

TAXIWAYS 23 WIDE
TAXIWAYS: ASPHALT
TAXIWAY A:
PCN: 80/F/B/X/T
TAXIWAYS B, A2, A3, A4, B3, B4 & B2:
PCN: 79/F/B/X/T
APRON: CONCRETE
PCN: 86/R/B/W/T

NOTE:
Contact FRS on 133.5 MHz at least
15 minutes before landing.



CHANGE : New TWYs layout and apron area.

TAKE-OFF MINIMUMS

RWY 12: 500 FT CEILING AND 3200 METERS VISIBILITY REQUIRED; OR STD WITH MINIMUM CLIMB RATE OF 250FT/NM TO 4000FT
RWY 30: 700FT CEILING AND 3200 METERS VISIBILITY REQUIRED; OR STD WITH MINIMUM CLIMB RATE OF 340FT/NM TO 3100FT

IFR DEPARTURE PROCEDURES

RWY 12: AFTER TAKE-OFF, IMMEDIATE RIGHT TURN CLIMBING ON R-126 TO 4000FT, THEN CLIMBING LEFT OR RIGHT TURN TO INTERCEPT AND PROCEED ON THE PUBLISHED AIRWAY RADIAL TO THE ASSIGNED ALTITUDE/LEVEL
RWY 30: CLIMB ON R-294 TO 3100FT, THEN CLIMBING LEFT TURN TO INTERCEPT AND PROCEED ON THE PUBLISHED AIRWAY RADIAL TO THE ASSIGNED ALTITUDE/LEVEL

TAKE-OFF OBSTACLES

RWY 12: 2405 FT TERRAIN-26°27'48"N 038°10'12"E
RWY 30: 2333 FT TERRAIN-26°30'20"N 038°04'32"E
2655 FT TERRAIN-26°31'00"N 038°04'30"E

FILING AS ALTERNATE (CEILING / VIS)			
	PRECISION	NON - PRECISION	RNAV
A			
B	NA	NA	NA
C			
D			

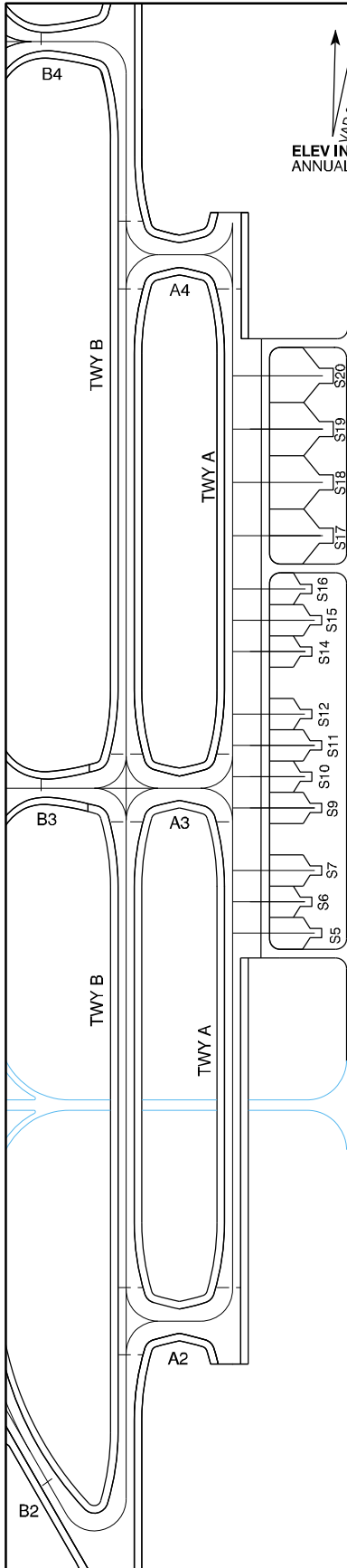
INTENTIONALLY BLANK

**AIRCRAFT PARKING /
DOCKING CHART - ICAO**

**APRON ELEV
2020**

FRS: 133.5
TIBA: 122.8
FIRE & RESCUE: 121.9
UNCONTROLLED AD

**ALULA /
PRINCE ABDULMAJEED BIN ABDULAZIZ INTERNATIONAL**



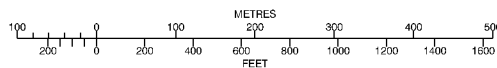
ELEV IN FEET
ANNUAL RATE OF CHANGE 2.9" E

VAR 3° E - 2010

- TAXIWAYS 23 WIDE
- TAXIWAYS: ASPHALT
- TAXIWAY A:
PCN: 80/F/B/X/T
- TAXIWAYS B, A2, A3, A4, B3, B4 & B2:
PCN 79/F/B/X/T
- APRON: CONCRETE
PCN: 86/R/B/W/T

**INS COORDINATES FOR
ACFT STANDS ON APRON**

S5	26°28'45.19"N	038°06'56.68"E
S6	26°28'44.87"N	038°06'58.30"E
S7	26°28'45.08"N	038°06'59.30"E
S9	26°28'42.36"N	038°07'02.20"E
S10	26°28'42.05"N	038°07'03.83"E
S11	26°28'42.26"N	038°07'04.82"E
S12	26°28'41.94"N	038°07'06.45"E
S14	26°28'39.22"N	038°07'09.36"E
S15	26°28'38.12"N	038°07'10.49"E
S16	26°28'37.81"N	038°07'12.12"E
S17	26°28'35.90"N	038°07'14.03"E
S18	26°28'34.69"N	038°07'16.38"E
S19	26°28'33.49"N	038°07'18.74"E
S20	26°28'32.29"N	038°07'21.10"E



CHANGE : New stands and apron layout.

LEGEND

AIRCRAFT STAND	S5
HOLDING POSITION	---
SERVICE ROAD	---

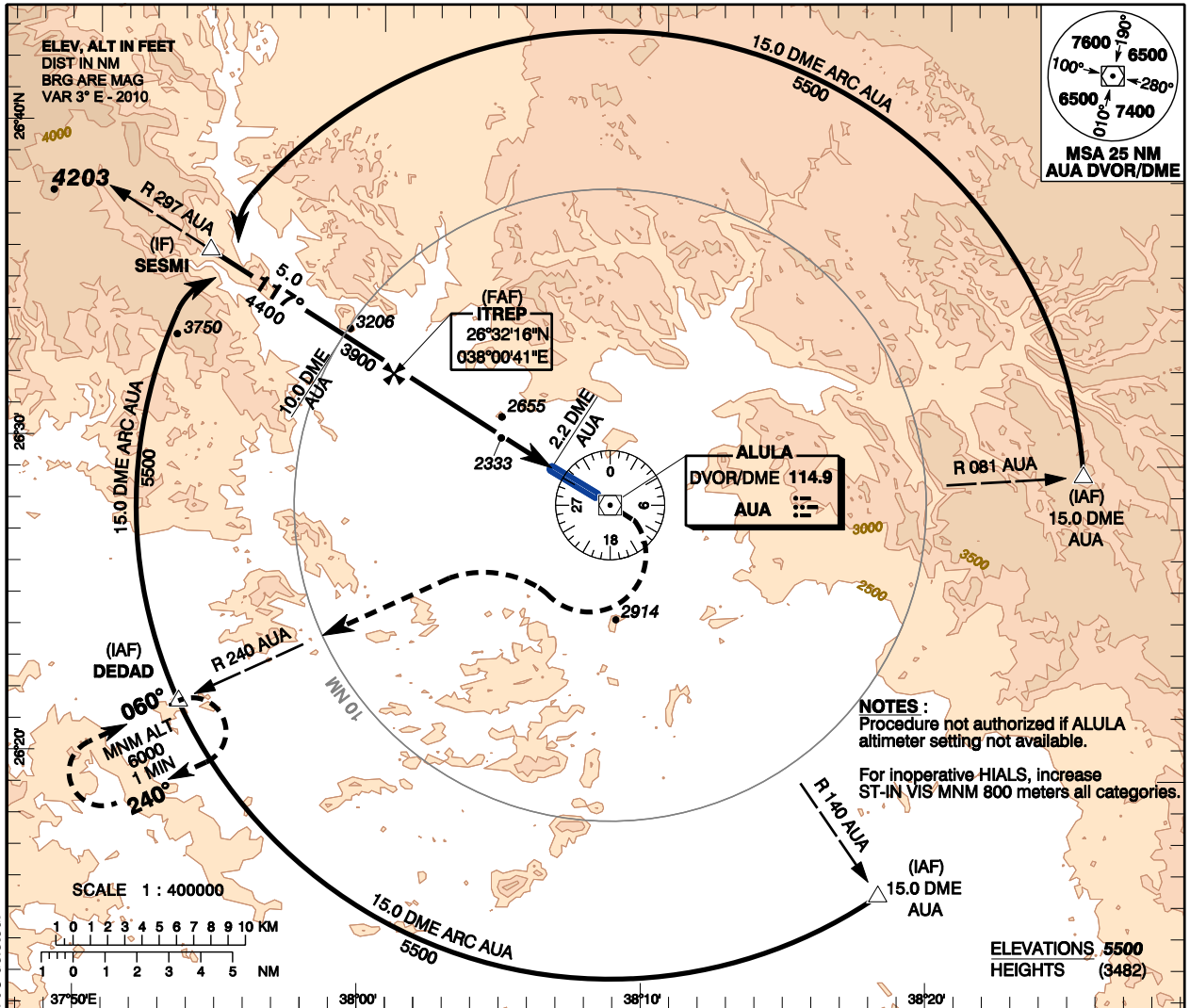
INTENTIONALLY BLANK

**INSTRUMENT
APPROACH
CHART - ICAO**

AERODROME ELEV 2046 ft
**HEIGHTS RELATED TO
TDZ RWY 12 - ELEV 2018 ft**

FRS : 133.5
TIBA : 122.8
FIRE & RESCUE 121.9
UNCONTROLLED AD

**ALULA/Prince Abdulmajeed
Bin Abdulaziz Intl (OEAO)**
VOR/DME RWY 12



CHANGE : OER70B Reassigned and OER70C deleted.
Amdt : Original, 26 AUG 2010

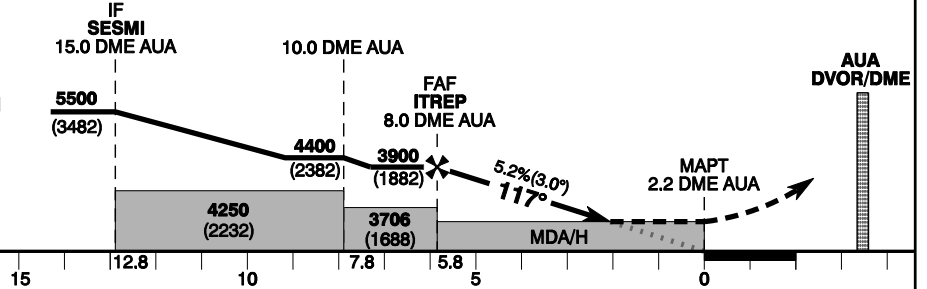
**TRANSITION ALT 13000
TRANSITION LEVEL FL150**

MISSED APPROACH

Climb to AUA DVOR/DME, then Climbing right turn and proceed outbound RDL 240 AUA to 6000 FT to DEDAD RDL 240/15.0 DME and hold.

THR ELEV 1995/TDZE 2018

NM to/from THR RWY 12



	ACFT CAT	A	B	C	D	GND SPEED									
						Knots	70	90	110	120	130	150	170	190	
Straight-in Approach	MDA(H)	2920 (902)				FAF-MAPT 5.8 NM	min:s	4:58	3:52	3:10	2:54	2:41	2:19	2:03	1:50
	VIS(m)	1200		3600		Rate of Descent		ft/min		371	478	584	637	690	796
Circling	MDA(H)	2920 (874)	2960 (914)	3320 (1274)	NA	DME AUA NM	7		6		5				
	VIS(m)	2000		4800		ALT (HGT) 5.2% APCH	3582 (1564)		3263 (1245)		2945 (927)				

CIRCLING NOT AUTHORIZED NE RWY 12/30.

ALULA/Prince Abdulmajeed
Bin Abdulaziz Intl (OEAO)

VOR/DME RWY 12

AERONAUTICAL DATA TABULATION

VOR/DME approach to RWY 12 from AUA DVOR/DME		
Fix/point	Coordinates	
DEDAD (IAF/MAHF) - RDL 240/15.0 DME AUA	26°21'27.6"N	037°53'33.9"E
SESMI (IF) - RDL 297/15.0 DME AUA	26°35'43.4"N	037°53'53.7"E
ITREP (FAF) - 8.0 DME AUA	26°32'15.8"N	038°00'41.3"E
AUA DVOR/DME	26°28'17.8"N	038°08'26.3"E
THR RWY 12	26°29'23.21"N	038°06'19.46"E

CHANGE : Reprint

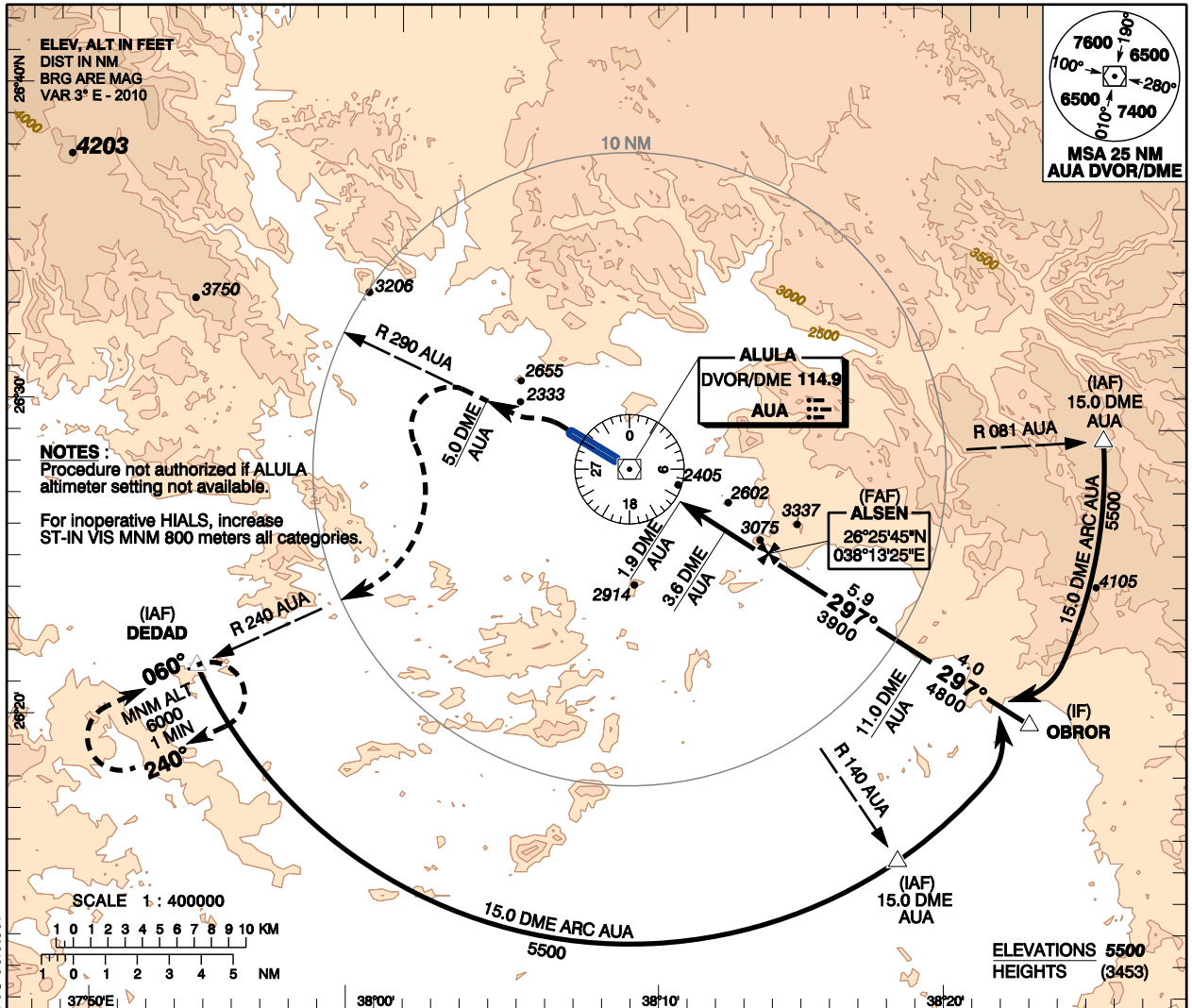
Amdt : Original, 26 AUG 2010

**INSTRUMENT
APPROACH
CHART - ICAO**

AERODROME ELEV 2046 ft
**HEIGHTS RELATED TO
TDZ RWY 30 - ELEV 2047 ft**

FRS : 133.5
TIBA : 122.8
FIRE & RESCUE 121.9
UNCONTROLLED AD

**ALULA/Prince Abdulmajeed
Bin Abdulaziz Intl (OEAO)**
VOR/DME RWY 30

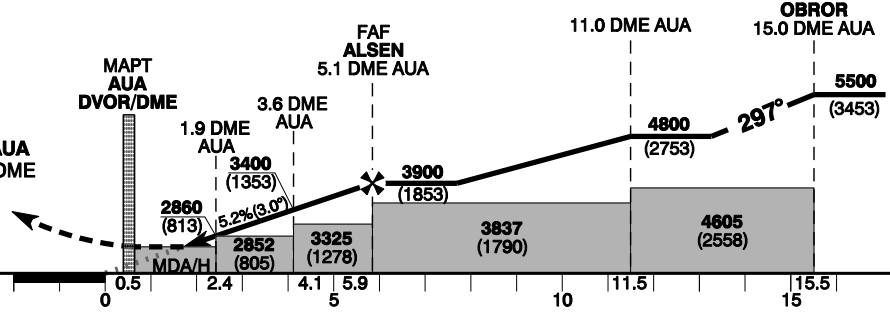


CHANGE : OER70B Reassigned and OER70C deleted.
Amdt : Original, 26 AUG 2010

TRANSITION ALT 13000
TRANSITION LEVEL FL150

MISSED APPROACH
Climb on RDL 290 AUA to 5.0 DME, then Climbing left turn to intercept and proceed outbound via RDL 240 AUA to 6000 FT to DEDAD RDL 240/15.0 DME and hold.

THR ELEV 2046/TDZE 2047
NM to/from THR RWY 30



Straight-in Approach	ACFT CAT	MDA(H)	VIS(m)	GND SPEED				FAF-MAPT 5.1 NM	Rate of Descent	DME AUA NM	ALT (HGT) 5.2% APCH	
				A	B	C	D					Knots
DVMR/DME	A							min:s	5	3858 (1811)		
	B	2660 (614)	800	2660 (614)	2000	3	4:24	371	4	3540 (1493)		
Circling	C	3320 (1274)	2000	3320 (1274)	2400	2	3:25	478	3	3221 (1174)		
	D	NA	4800	NA	NA	1	2:48	584	2	2903 (856)		

CIRCLING NOT AUTHORIZED NE RWY 12/30.

ALULA/Prince Abdulmajeed
Bin Abdulaziz Intl (OEAO)

VOR/DME RWY 30

AERONAUTICAL DATA TABULATION

VOR/DME approach to RWY 30 from AUA DVOR/DME		
Fix/point	Coordinates	
DEDAD (IAF, MAHF) - RDL 240/15.0 DME AUA	26°21'27.6"N	037°53'33.9"E
OBROR (IF) - RDL 117/15.0 DME AUA	26°20'51.4"N	038°22'57.6"E
ALSEN (FAF) - 5.1 DME AUA	26°25'45.5"N	038°13'24.8"E
AUA DVOR/DME (MAPT)	26°28'17.8"N	038°08'26.3"E
THR RWY 30	26°28'34.24"N	038°07'55.24"E

CHANGE : Reprint

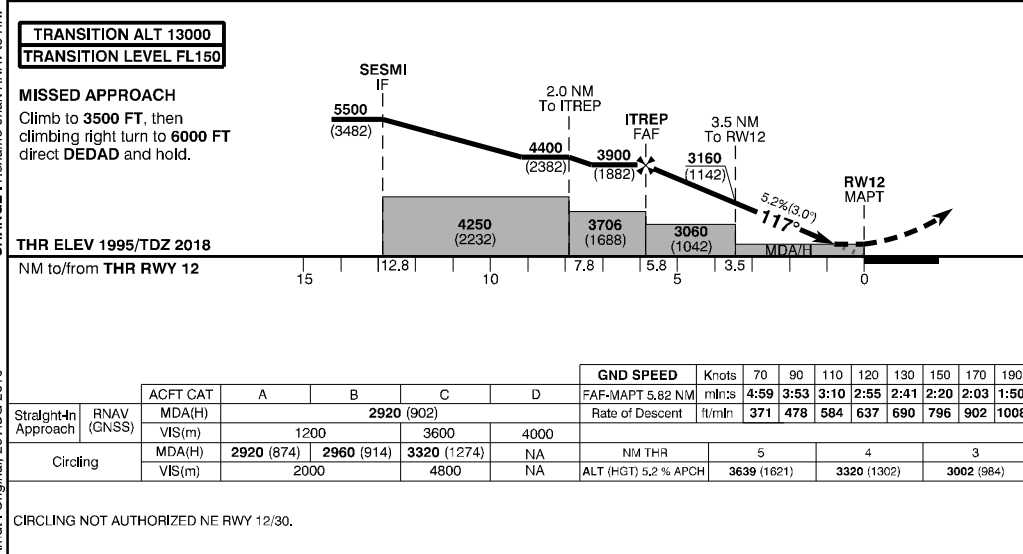
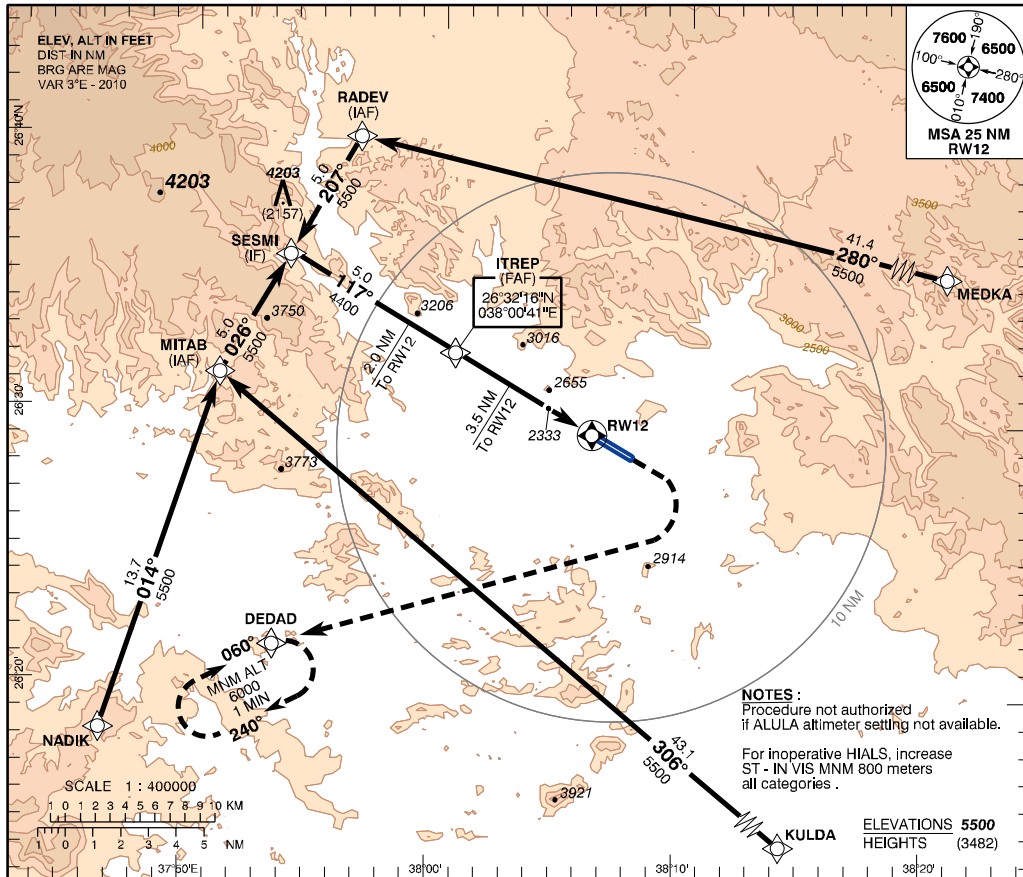
Amdt : Original, 26 AUG 2010

**INSTRUMENT
APPROACH
CHART - ICAO**

**AERODROME ELEV 2046 ft
HEIGHTS RELATED TO
TDZ RWY 12 - ELEV 2018 ft**

FRS : 133.5
TIBA : 122.8
FIRE & RESCUE 121.9
UNCONTROLLED AD

**ALULA/Prince Abdulmajeed
Bin Abdulaziz Intl (OEAO)
RNP RWY 12**



CHANGE : Rename chart RWAY to RNP
Amcdt : Original, 26 AUG 2010

**ALULA/Prince Abdulmajeed
Bin Abdulaziz Intl (OEAO)**

RNP RWY 12

AERONAUTICAL DATA TABULATION

RNP approach to RWY 12		
Fix/point	Coordinates	
MITAB (IAF)	26°31'21.5"N	037°51'09.0"E
RADEV (IAF)	26°40'05.3"N	037°56'38.6"E
SESMI (IF)	26°35'43.4"N	037°53'53.7"E
ITREP (FAF)	26°32'15.8"N	038°00'41.3"E
DEDAD (MAHF)	26°21'27.6"N	037°53'33.9"E
MEDKA	26°31'10.5"N	038°41'43.8"E
NADIK	26°18'15.2"N	037°46'37.1"E
KULDA	26°04'10.5"N	038°28'23.0"E
THR RWY12 - RW12 (MAPT)	26°29'23.21"N	038°06'19.46"E

CHANGE : Rename chart RNAV to RNP

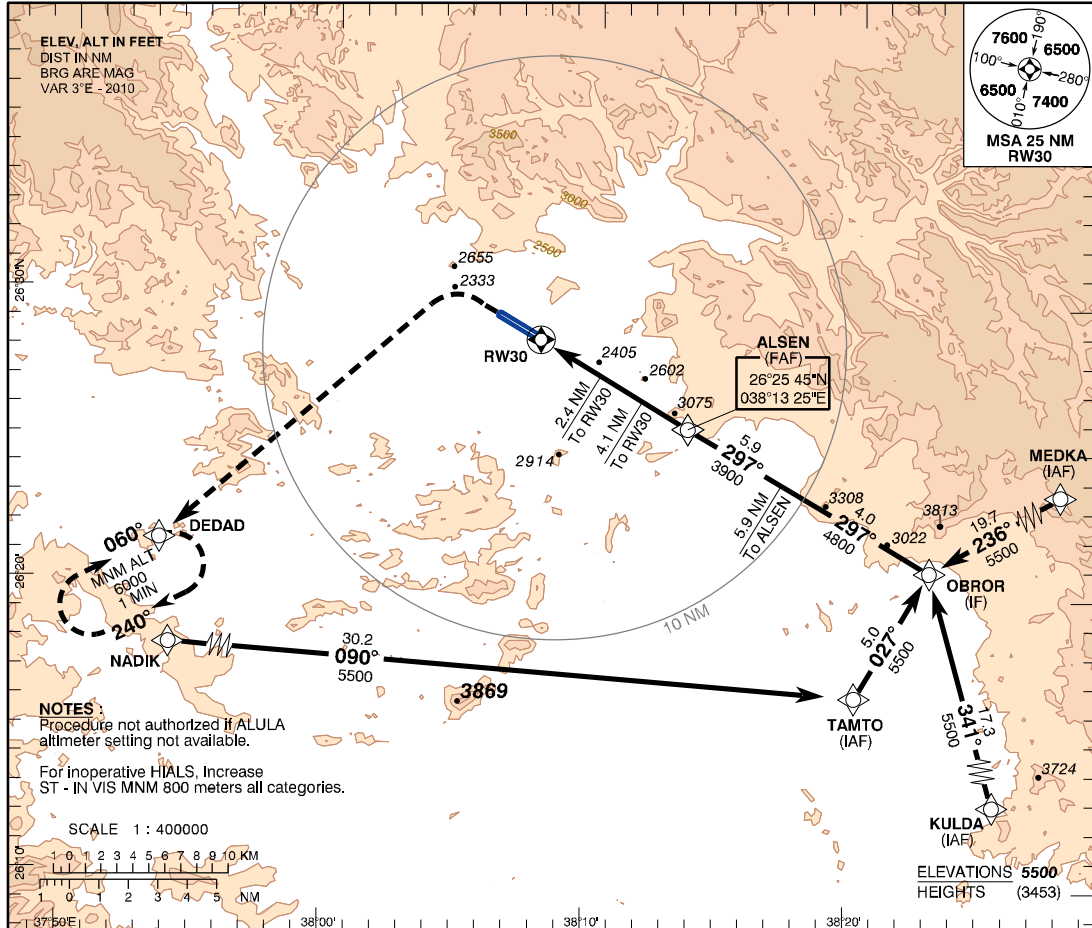
Amdt : Original, 26 AUG 2010

**INSTRUMENT
APPROACH
CHART - ICAO**

AERODROME ELEV 2046 ft
HEIGHTS RELATED TO
TDZ RWY 30 - ELEV 2047 ft

FRS : 133.5
TIBA : 122.8
FIRE & RESCUE 121.9
UNCONTROLLED AD

**ALULA/Prince Abdulmajeed
Bin Abdulaziz Intl (OEAO)**
RNP RWY 30

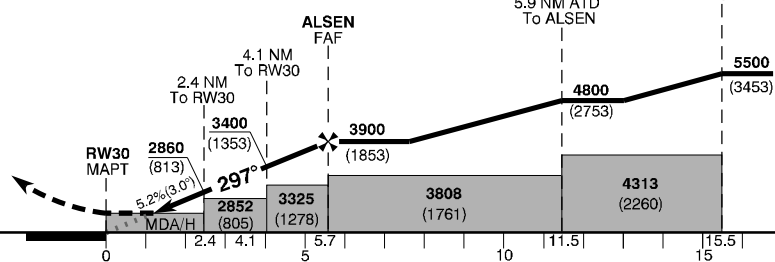


CHANGE : Rename chart RNAV to RNP

TRANSITION ALT 13000
TRANSITION LEVEL FL150

MISSED APPROACH
Climb to **3500 FT**, then climbing left turn to **6000 FT** direct **DEDAD** and hold.

THR ELEV 2046/TDZ 2047
NM to/from **THR RWY 30**



Amtd: Original, 26 AUG 2010

Straight-in Approach	ACFT CAT	A	B	C	D	GND SPEED								
						70	90	110	120	130	150	170	190	
Circling	MDA(H)	2660 (613)				2400	FAF-MAPT 5.67 NM							
	VIS(m)	800				2000	Rate of Descent							
Circling	MDA(H)	2660 (614)	2960 (914)	3320 (1274)	NA	NM THR								
	VIS(m)	1600	2000	4800	NA	ALT (HGT) 5.2% APCH								

CIRCLING NOT AUTHORIZED NE RWY 12/30.

**ALULA/Prince Abdulmajeed
Bin Abdulaziz Intl (OEAO)****RNP RWY 30****AERONAUTICAL DATA TABULATION**

RNP approach to RWY 30		
Fix/point	Coordinates	
TAMTO (IAF)	26°16'30.1"N	038°20'12.2"E
MEDKA (IAF)	26°31'10.5"N	038°41'43.8"E
KULDA (IAF)	26°04'10.5"N	038°28'23.0"E
OBROR (IF)	26°20'51.4"N	038°22'57.7"E
ALSEN (FAF)	26°25'45.5"N	038°13'24.8"E
DEDAD (MAHF)	26°21'27.6"N	037°53'33.9"E
NADIK	26°18'15.2"N	037°46'37.1"E
THR RWY 30 - RW30 (MAPT)	26°28'34.24"N	038°07'55.24"E

CHANGE : Rename chart RNAV to RNP

Amdt : Original, 26 AUG 2010