

You will need to know the following about the kinds of operations & special flight operations:

- commercial or non-commercial
- day/night/ IFR/VFR flights
- high altitude flights
- flights in icing conditions
- flights over water
- flights in designated airspace
- low visibility flight operations
- flights with the aid of night vision goggles
- other special flight operations in Part 91, Subpart D
- rotorcraft performance class (1, 2 or 3)

Start

Establish the kind(s) of operation and type of aircraft that you wish to evaluate.

You will need to know the following about the aircraft:

- type of aircraft (airplane, seaplane or rotorcraft)
- pressurized or unpressurized
- certification category (transport, commuter or other)
- engine type (turbojet, turbine powered or other)
- maximum takeoff mass (kg)
- number of passenger seats
- rotorcraft performance category (A or B)

Using the table in **GACAR § 91.303 Instruments and Equipment Requirements: Powered Saudi-Arabian Registered Aircraft With Standard Airworthiness Certificates** or **§ 91.304 Instruments and Equipment Requirements: All Other Saudi Arabian Registered Aircraft**, identify all required instruments and equipment for the kind(s) of operation.

Record all of these required instruments and equipment on **Sheet "91-C"**

No
Is the aircraft engaged in any Special Flight Operation(s) as listed in **GACAR Part 91, Subpart D**?

Yes

Using the applicable requirements in **Appendix D of GACAR Part 91**, identify all required instruments and equipment for the Special Flight Operation(s)

Record all of these required instruments and equipment on **Sheet "91-D"**

If applicable, determine the oxygen supply requirements for high altitude flights by referring to the tables in **GACAR § 91.305 Supplemental Oxygen Supply Requirements**.

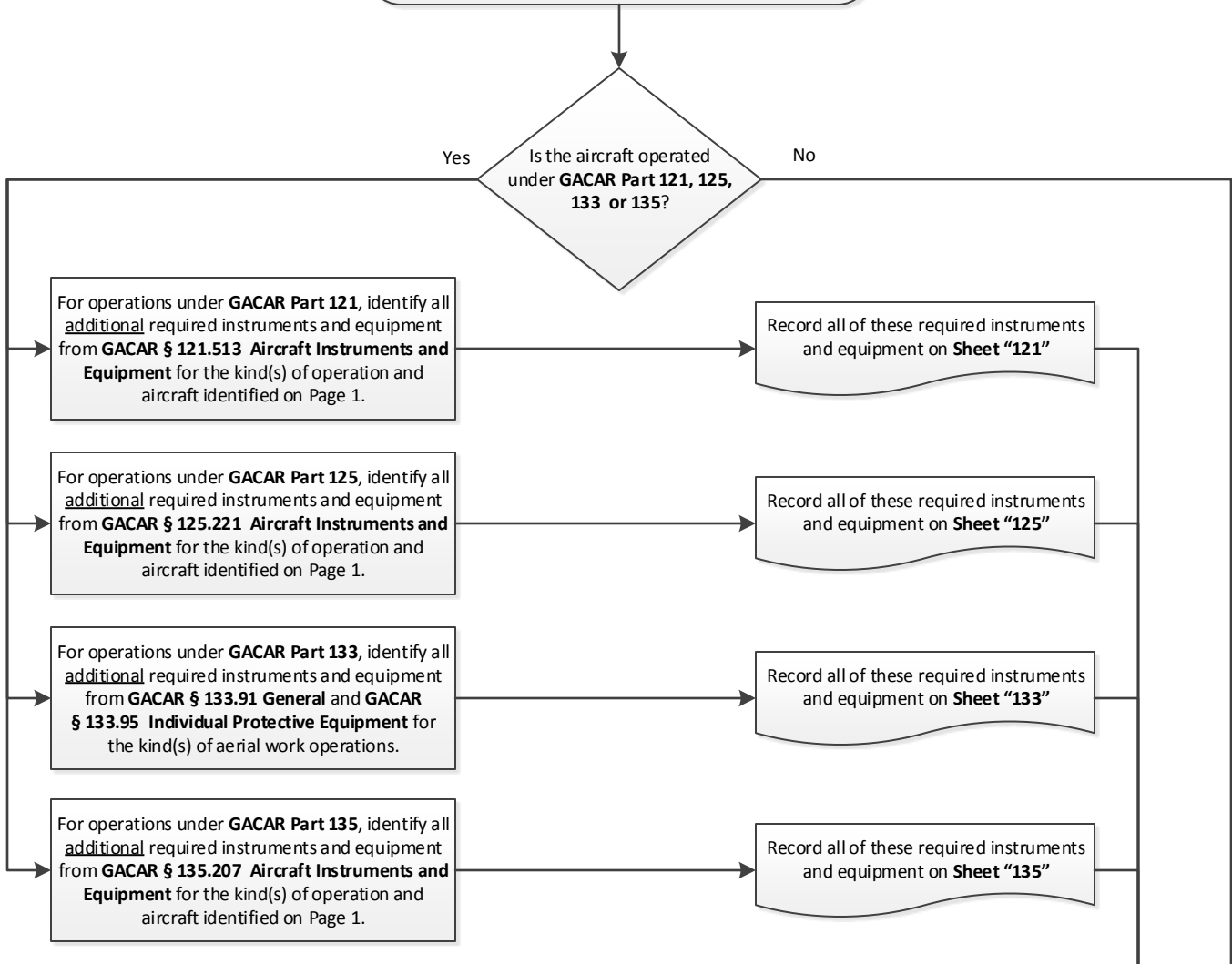
Record the oxygen supply values on **Sheet "91-O₂"**

Go to Next Page

How to Identify all Required Instruments & Equipment

GACAR Part 91, Subparts C & D
(Version 4)

Continued from Previous Page



NOTE:
Detailed performance and installation standards for required instruments and equipment are indicated in the applicable table or in Appendix C of GACAR Part 91.

NOTE:
Certain items of required equipment have associated "Use of" rules in GACAR Part 91, Subpart B.

How to Identify all Required Instruments & Equipment

GACAR Parts 91, 121, 125, 133 and 135
(Version 4)